

## Hardware Configuration Tool for the DR-6255 (Rev. B)

### Software Manual

## 1. Introduction

The DR-6255 is a desktop smart card CSN enrollment reader with a USB interface for use when enrolling user credentials to access control software such as Rosslare's AxTraxNG.

The standard reader outputs the Wiegand CSN data in Wiegand 26-Bit format. The CS-HCT Hardware Configuration Tool for the DR-6255 allows you to select other output formats.

## 2. Installing the Software

### To install the Hardware Configuration Tool application:

1. Download the installation setup file from the Rosslare site.
2. Double-click the setup file.  
The installation package extracts the installation files. After the files are extracted, the welcome screen to the setup opens.
3. Follow the onscreen instructions to install the application.

The software is supported by the following operating systems:

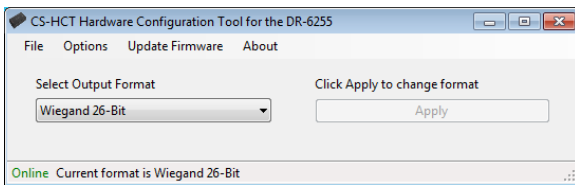
- Windows 10 (32-Bit and 64-Bit)
- Windows 7 32- and 64-Bit
- Windows Vista and Vista 64-Bit
- Windows XP and XP 64-Bit

## 3. Connecting the Reader

Once you've installed the application, you must connect the DR-6255 reader to your PC to verify that there is a connection between the reader and the software.

### To connect the DR-6255:

1. Connect the reader to the PC using the USB cable.  
You hear 3 beeps.
2. Double-click the *CS-HCT Hardware Configuration Tool for the DR-6255* icon or select the program from the Rosslare folder in the **Start** menu.  
The application opens.



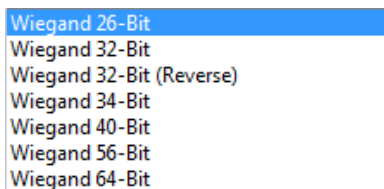
The software indicates on the bottom left of the screen that the connection was successful.

### 3.1 Setting the Output Format

Once you have connected to the reader, you can use the application to select the output format.

#### To select the output format:

1. From the dropdown in the main window, select the output format.



2. Click **Apply**.

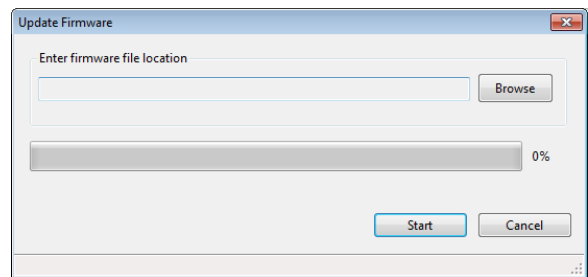
You can now proceed to use the access control software (such as AxTraxNG) to enroll the cards in to the access control system. Please refer to the *AxTraxNG™ Software Installation and User Manual*.

### 3.2 Updating the Firmware

In addition to selecting the output format, you can also update the firmware version of the DR-6255 reader.

#### To update the firmware:

1. Click the Firmware menu item.
2. The *Update Firmware* window opens.



3. Browse to the location of the firmware files for update.
4. Click **Start**.
5. When the process finishes, click **Close**.

---

## Limited Warranty

---

The full ROSSLARE Limited Warranty Statement is available in the Quick Links section on the ROSSLARE website at [www.rosslaresecurity.com](http://www.rosslaresecurity.com).

Rosslare considers any use of this product as agreement to the Warranty Terms even if you do not review them.

---

## Contact Information

---

### United States and Canada

Rosslare Security Products, Inc.  
Southlake, TX, USA  
Toll Free: +1-866-632-1101  
Local: +1-817-305-0006  
Fax: +1-817-305-0069  
[support.na@rosslaresecurity.com](mailto:support.na@rosslaresecurity.com)

### Europe

Rosslare Israel Ltd.  
22 Ha'Melacha St., P.O.B. 11407  
Rosh HaAyin, Israel  
Tel: +972-3-938-6838  
Fax: +972-3-938-6830  
[support.eu@rosslaresecurity.com](mailto:support.eu@rosslaresecurity.com)

### Latin America

Rosslare Latin America  
Buenos Aires, Argentina  
Tel: +54-11-4001-3104  
[support.la@rosslaresecurity.com](mailto:support.la@rosslaresecurity.com)

### China

Rosslare Electronics (Shenzhen) Ltd.  
Shenzhen, China  
Tel: +86-755-8610-6842  
Fax: +86-755-8610-6101  
[support.cn@rosslaresecurity.com](mailto:support.cn@rosslaresecurity.com)

### Asia Pacific, Middle East, Africa

Rosslare Enterprises Ltd.  
Kowloon Bay, Hong Kong  
Tel: +852-2795-5630  
Fax: +852-2795-1508  
[support.apac@rosslaresecurity.com](mailto:support.apac@rosslaresecurity.com)

### India

Rosslare Electronics India Pvt Ltd.  
Tel/Fax: +91-20-40147830  
Mobile: +91-9975768824  
[sales.in@rosslaresecurity.com](mailto:sales.in@rosslaresecurity.com)



EN ISO 13485

