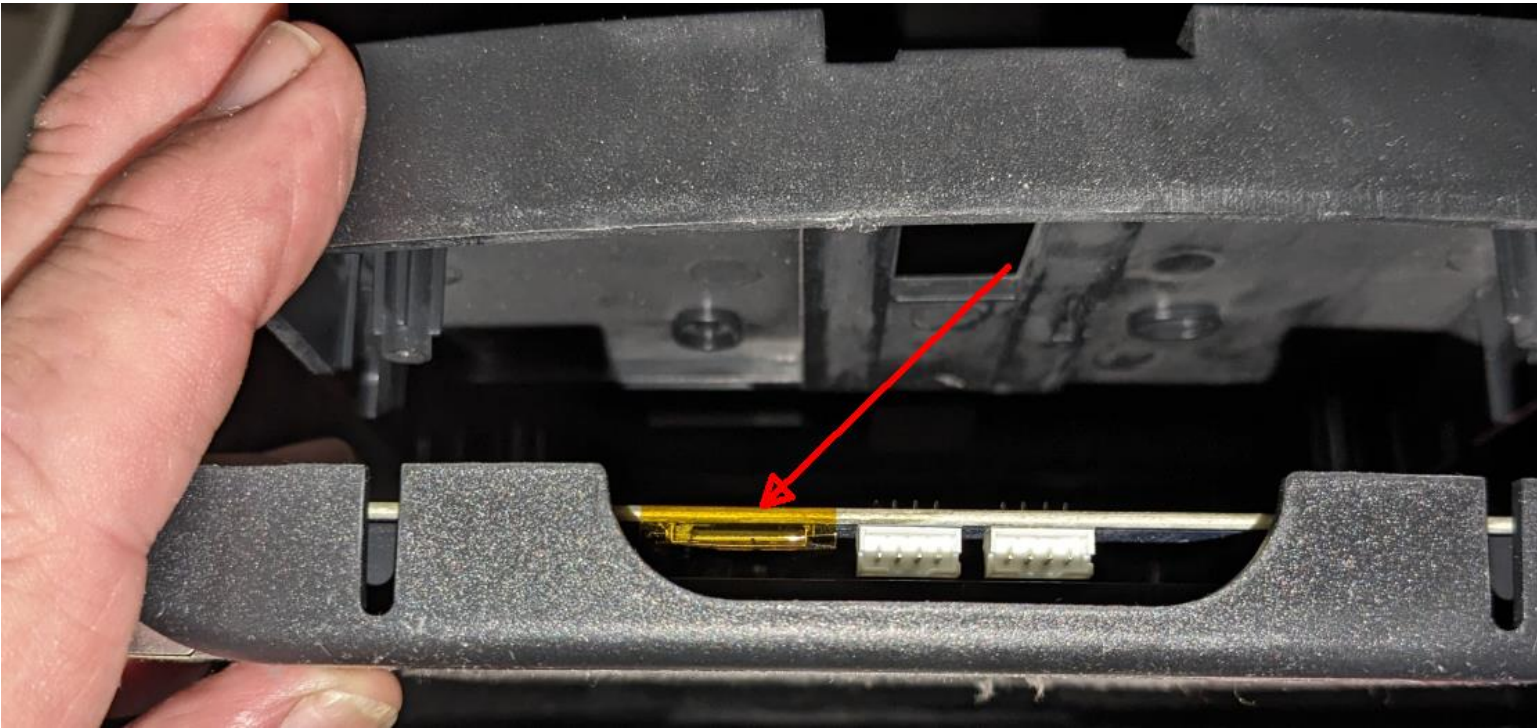


## AC-825IP micro SD card replacement

1. Power down the AC-825IP, disconnect the AC cord going to it and disconnect the backup battery if one is installed.
2. Remove the 6 mounting screws (red arrows) on the AC-825IP main board, these are captive so they should not fall out.
3. You may also remove the light bar at the top (green arrow) to use or just to get out of the way.
4. Lean the board out at the top, you should be able to lean it out enough without disconnecting the wiring to the panel.
  - a. Be warned there are small cables plugged into the board on the back also so don't pull it out too far.



1. The SD card is on the top left behind the plastic cover (blue arrow). There will be a small piece of clear amber tape over it that must be removed.
2. The SD card does lock in with a click so push on it to release it and push it in until clicks to install.



1. Replace the 6 mounting screws (red arrows) on the AC-825IP main board, snug only do not overtighten.
2. Replace the light bar if it was removed, line the white mark on the light bar up with the mark on the cabinet in the center.
3. Reconnect the AC power and battery if equipped.